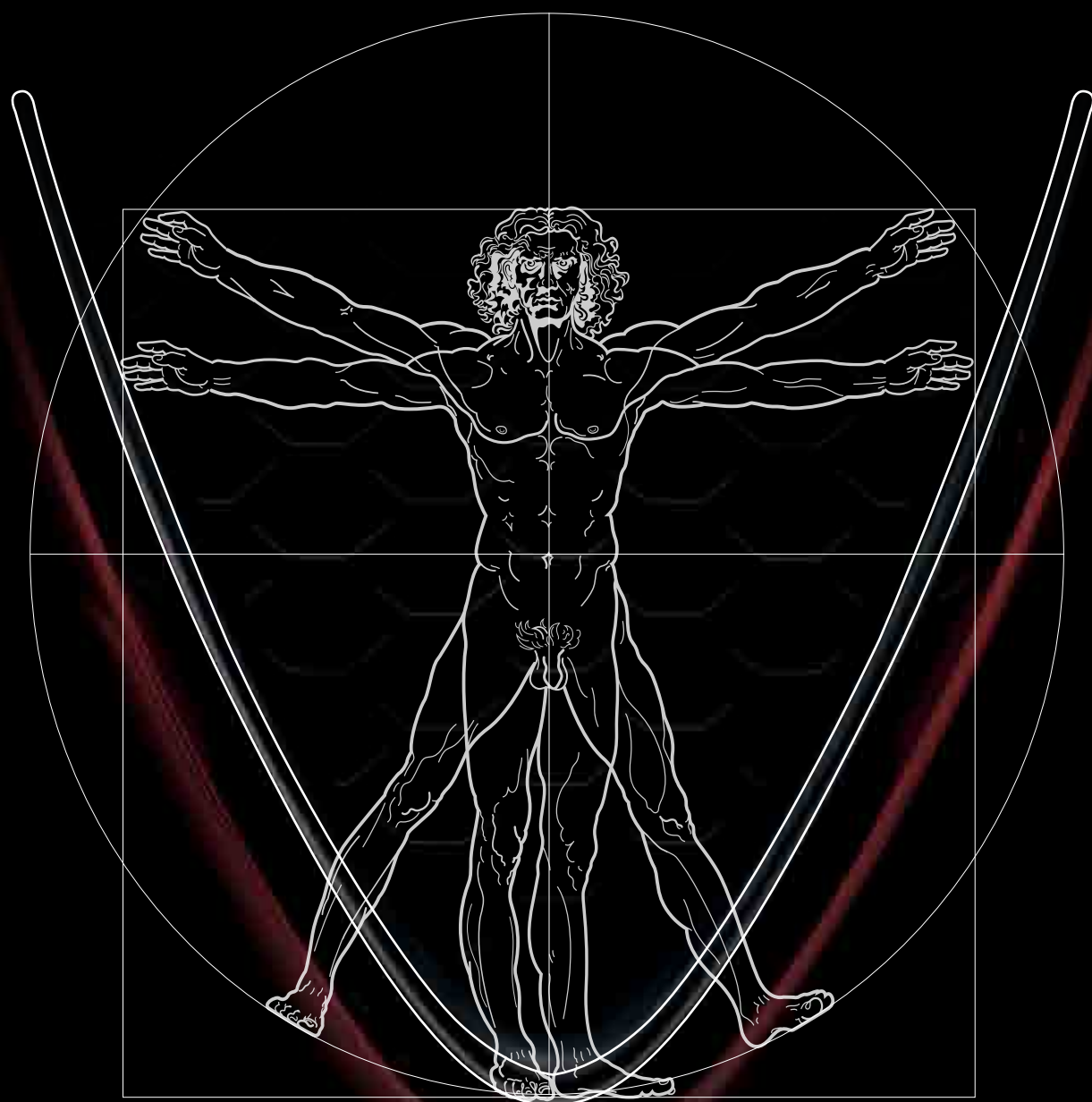




GIULIA



A NEW ERA A NEW PARADIGM A NEW ALFA ROMEO

Alfa Romeo has always taken a unique and totally original approach to designing its automobiles: it is the point of convergence between design and passion, between a love for the most cutting-edge technology and a strong instinct to inspire emotions. Today Alfa Romeo is writing a new chapter in its history, introducing a future where once again the driver is at the centre of the design. Here is the new Alfa Romeo Giulia.

CHANGE THE HORIZON WITH A NEW PERSPECTIVE

Simplicity, formal balance and harmonious surfaces. A unique and unmistakable appearance, represented by the trilobe. This is the Alfa Romeo style. The Giulia embodies that style. Beautiful and functional: with balanced weight distribution and rear wheel drive, the engine and mechanics between the two axles, all its power is transferred to the road. The Giulia's surfaces are defined by light. Its profile is power and motion.



ORGANIC COMFORT

The Giulia's interior is built around the driver, but all passengers travel in comfort and safety. Simple and essential, it puts the driver at the exact centre of the action. The interior of the Giulia is striking for its combination of materials. All materials are selected to be in full harmony with the personality of the Giulia and the crafted finish that only Italian Style can provide. Form, function and beauty are inseparable. An intense experience, aimed at all the senses.





A HIGH PERFORMANCE MINDSET

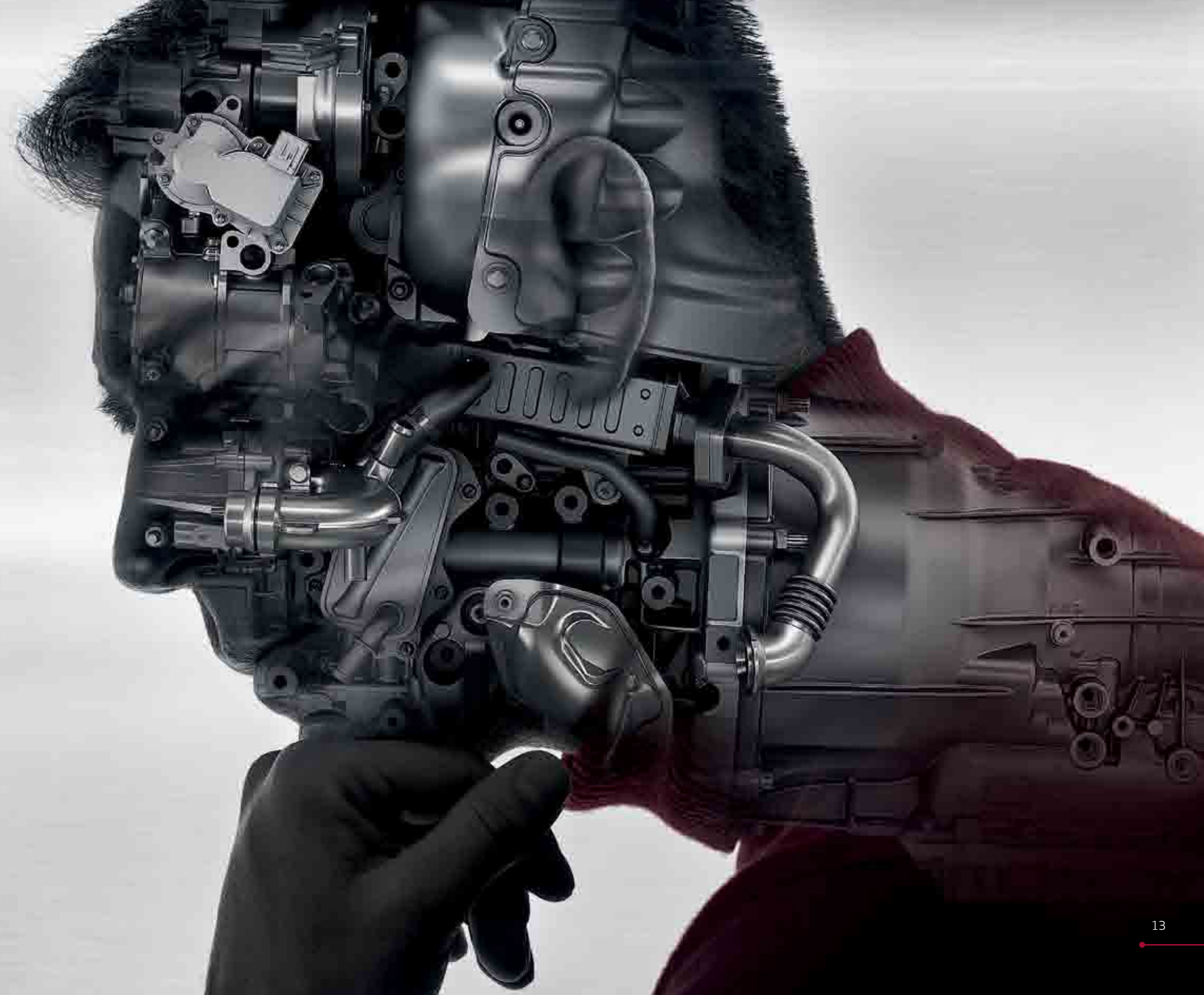
Every detail of the Alfa Romeo Giulia was designed to give the best performance, also in terms of efficiency. The engines, all turbo-charged and built entirely in aluminium, offer an unprecedented balance of power and respect for the environment. 2.0L Turbo Petrol, available in 147kW or 206kW, and 2.2L Turbo Diesel, available in 132kW, all with 8-speed automatic transmission. With the Giulia, emotion also takes the lead.

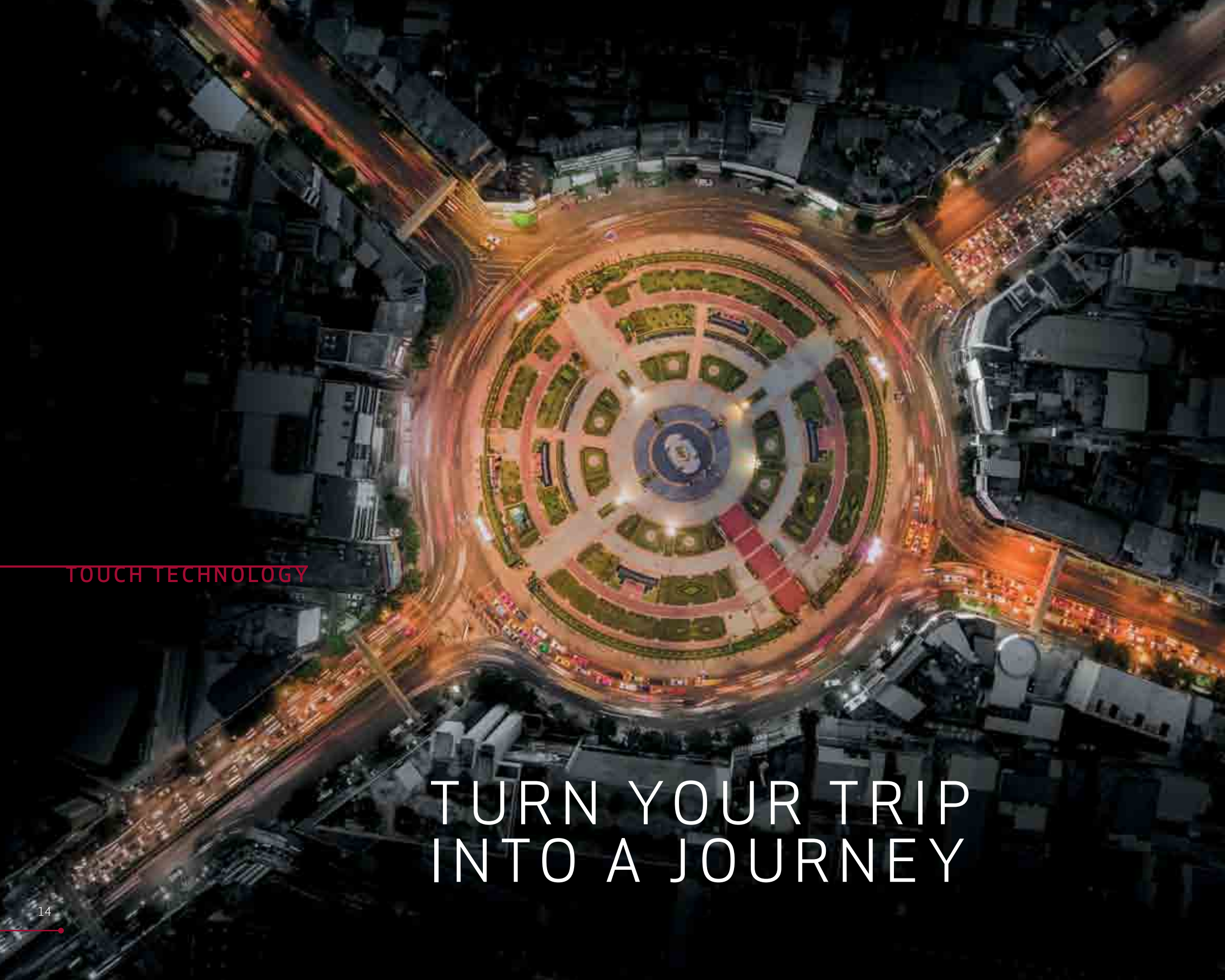


2.0L TURBO PETROL



2.2L TURBO DIESEL





TOUCH TECHNOLOGY

TURN YOUR TRIP INTO A JOURNEY



The new Alfa DNA™ System lets the Giulia vary the dynamic responses and customize them according to your driving style and travelling conditions.

- d Dynamic:** favours performance and responsiveness. The steering response is more accurate, the braking more responsive and the electronic control systems leave space for the enjoyment of a sporty drive.
- n Natural:** ideal for both city streets and highways. The dynamic behaviour is geared to comfort and efficiency.
- a Advanced Efficiency:** A new mode that allows you to maximize energy savings and minimize emission levels.

The Alfa™ DNA System also interacts with the Alfa™ Active Suspension (optional)*: the shock absorbers adapt to the desired driving style, becoming more rigid for a sporty ride, or softer, for a more comfortable drive.

NO BALANCE HAS
COMPRIMISES

The Giulia reaches a C_d equal to 0.25. This confirms the great commitment to aerodynamic development, and the constant and exhaustive work conducted in the wind tunnel. This research made it possible to develop and adopt the most advanced technical solutions: in particular, the streamlined design of the base that improves the airflow under the car and the aerodynamic flow management at the rear help reduce turbulence, improving dynamic efficiency.

Maximum attention to detail in every design feature gives the car its perfect balance. In fact, the rear-drive combined with the longitudinal front position of the aluminium engine and the carbon transmission shaft ensure an optimal weight distribution along the frame.

50
50 0.25 C_d
Drag coefficient

OPTIMAL WEIGHT DISTRIBUTION

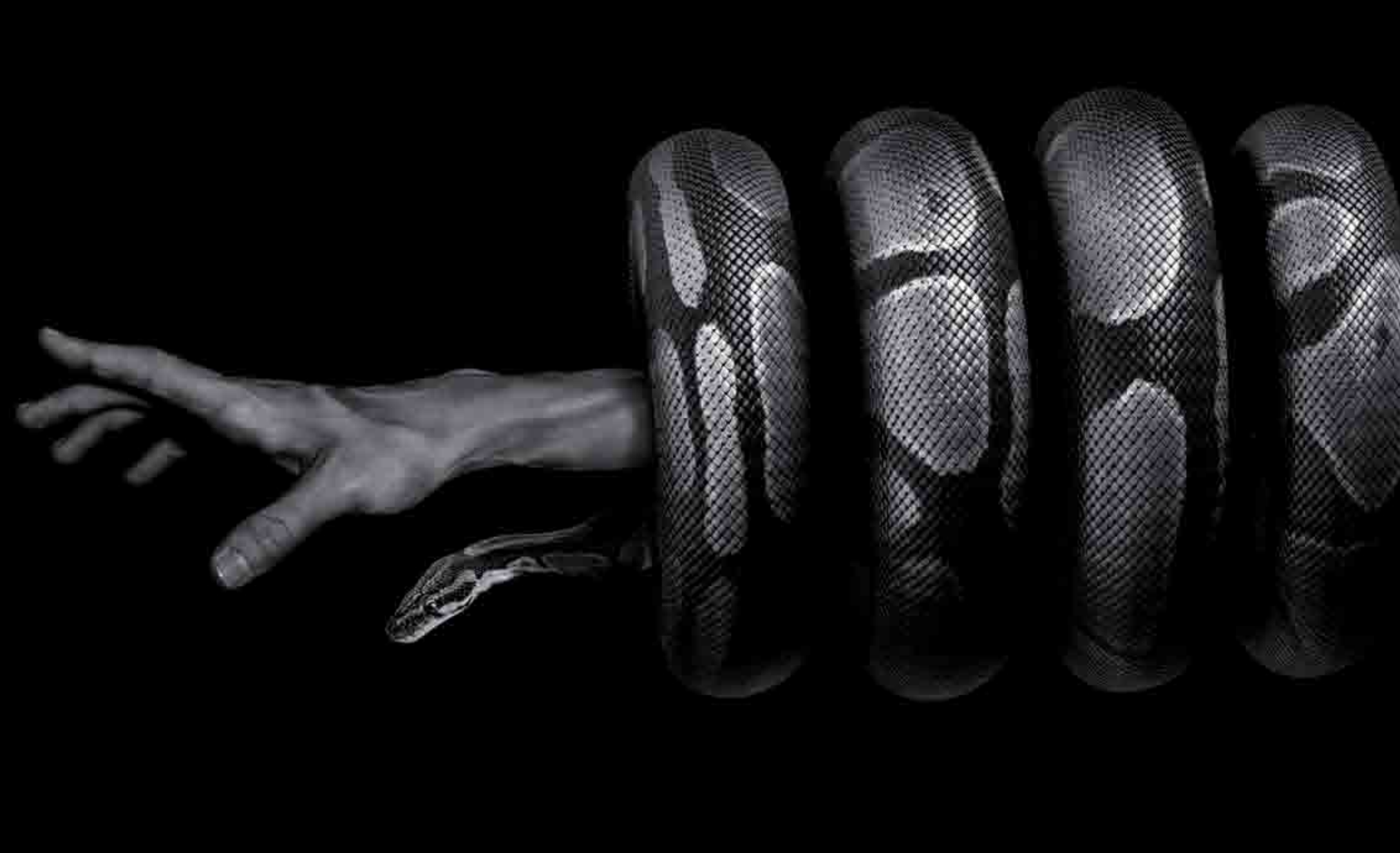




10.8_m
Turning circle

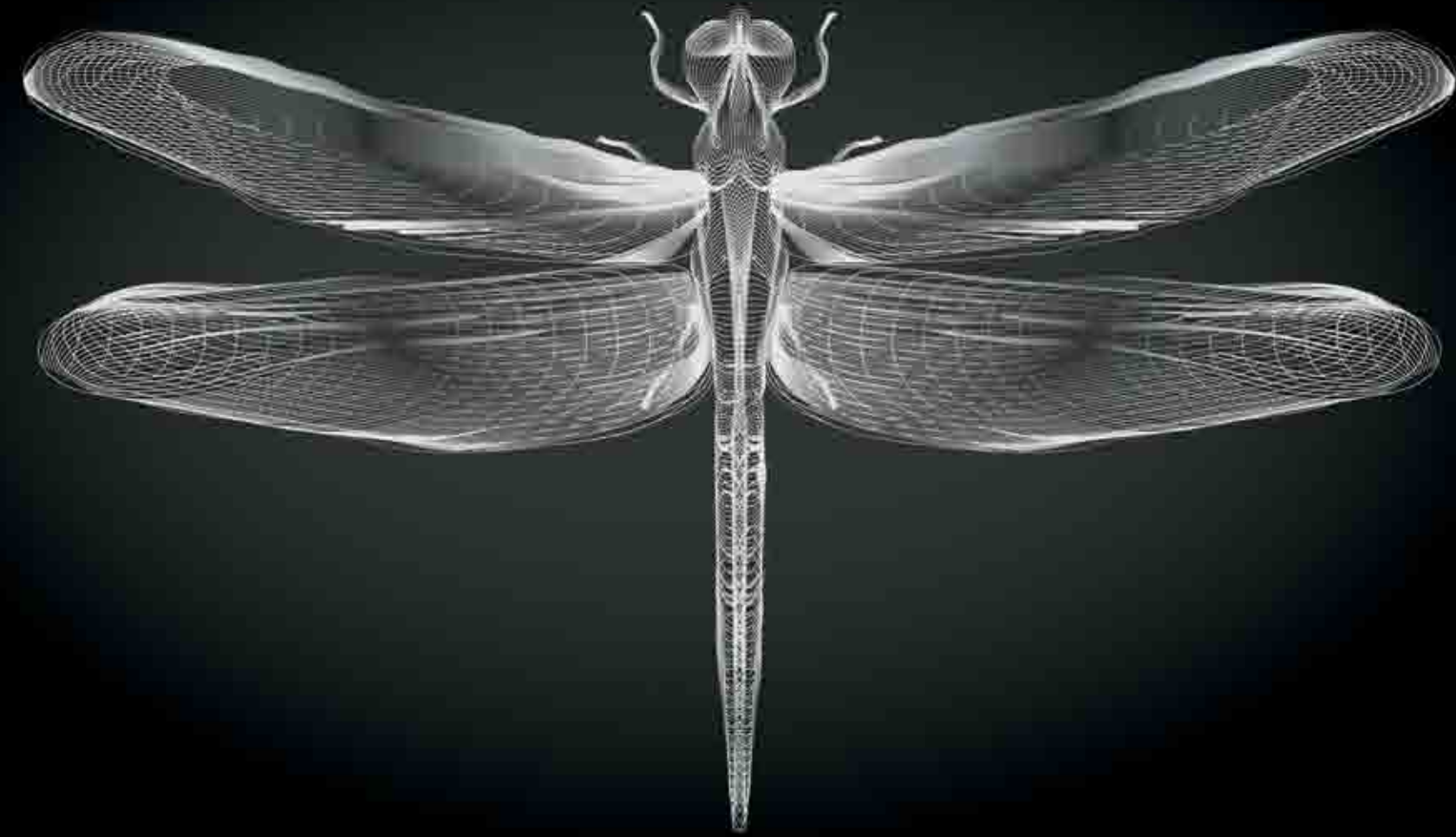
DRIVING EXCITEMENT

SENSE THE ALFA ROMEO GRIP



The return to rear wheel drive combined with precise and direct steering, represents the ultimate synthesis of sportiness and comfort for pure driving pleasure. The road grip is guaranteed by the new Alfa™ Link suspension, all-aluminium, which ensures excellent dynamic behaviour and unique handling. In the front, the new double wishbone system with semi-virtual steering axis keeps the wheels perfectly perpendicular to the road even on the most challenging corners. At the rear, the four-and-a-half arm Multilink system represents the best combination of lateral grip when cornering and comfort level, even on uneven road surfaces. Moreover, thanks to its compactness, the maximum rear passenger room is guaranteed.

The Alfa™ Active Suspension (optional)* dynamically adjusts the suspension response depending on driving conditions and mode selected using the Alfa DNA™ Driving Mode Selector. This technology allows for a setting of softer shock absorbers for a more comfortable drive, or a more rigid setting, for more accuracy in sports driving.



NATURALLY ENGINEERED FOR MINIMUM WEIGHT

The new Giulia is designed to provide an excellent power to weight ratio thanks to the extensive use of ultra-light materials: carbon fibre for the driveshaft and aluminium for the hood, doors, engine, suspension and brake calipers. These choices translate to greater efficiency and better driving dynamics, for a considerable reduction in fuel consumption and emissions. ⁽¹⁾



80%

Aluminium Parts
in the front suspension

45%

Aluminium Parts
in the rear suspension

BORN INTUITIVE

The Giulia's safety systems employ today's most advanced technology to support intuitive driving with different levels of intervention, preventing risks and dangerous situations.

Forward Collision Warning (FCW) with Autonomous Emergency Brake (AEB) with pedestrian recognition and active braking. This device warns the driver of a potential head-on collision, using acoustic and visual signals and activating the braking system. In urban driving, at speeds below 50 km/h, it can also detect the presence of pedestrians in the car's path and stop on its own in case the driver is unable to actively intervene.

Integrated Brake System (IBS)

The new Alfa Romeo Giulia is the first sedan in its segment to be equipped with this innovative electromechanical device, which combines the functions of the brake system with those of stability control. With the highly sensitive brake pedal, the system eliminates any vibration in the case of ABS braking. It responds powerfully and rapidly, and can stop the car from 100 to 0 km/h in a space of just 38.5 meters.

Lane Departure Warning (LDW)

A video sensor installed on the windscreen recognizes the road surface markings and alerts the driver with audio and visual warnings, if the driver moves out of the lane involuntarily or fails to use turn signals.

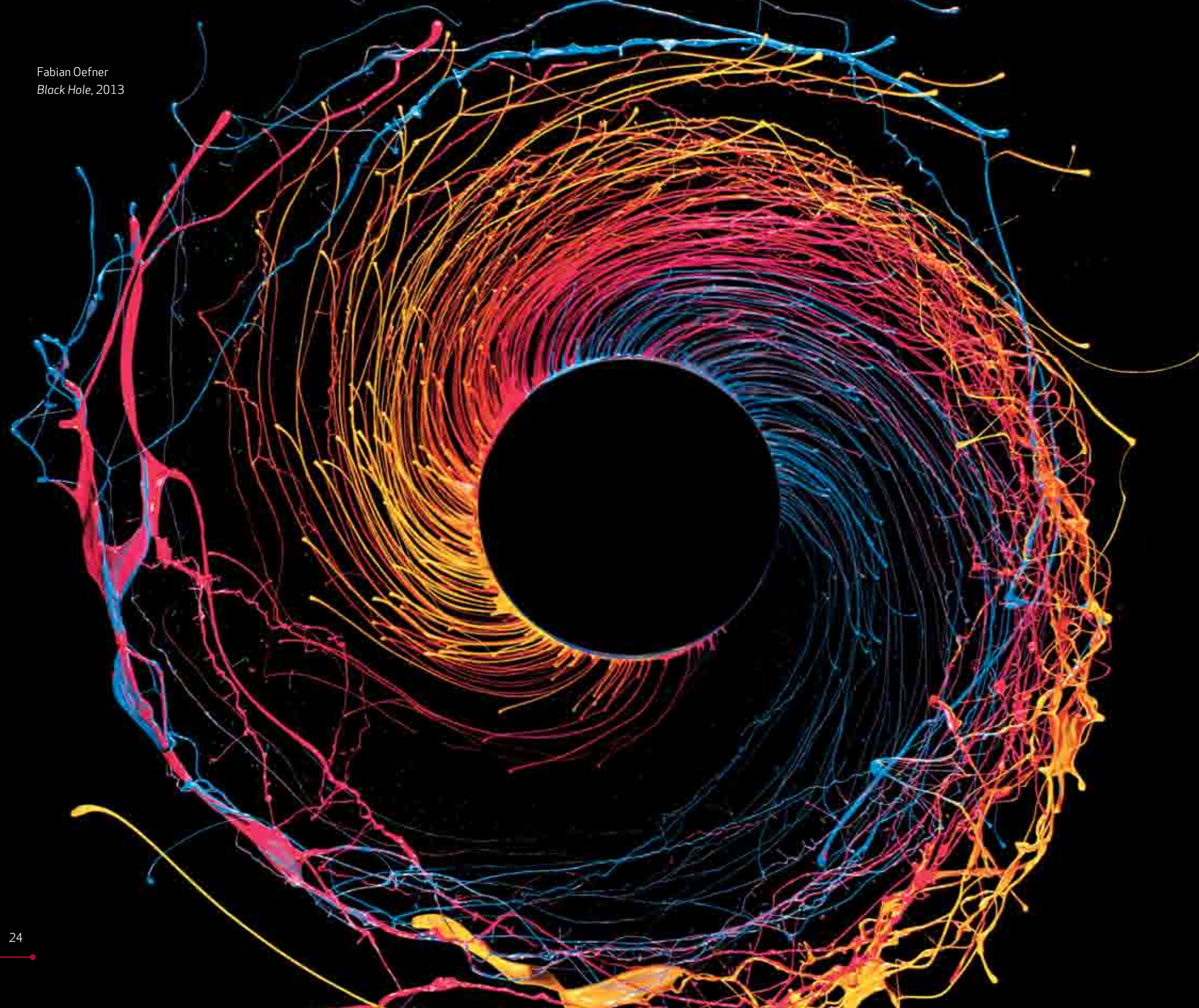
Blind Spot Monitoring (BSM)

The system continuously monitors the rear blind spots on both sides of the vehicle, using two radars set in the rear bumper. Any potential risk is signalled with lights on the exterior mirrors, warning the driver of obstacles at the sides of the vehicle.

Rear Cross-Path Detection monitors the area behind the car during reversing manoeuvres. The device signals the approach of other vehicles at a right angle to the car and at speeds lower than about 35 km/h.

FORWARD COLLISION WARNING (FCW)
 AUTONOMOUS EMERGENCY BRAKE (AEB)
 INTEGRATED BRAKE SYSTEM (IBS)
 LANE DEPARTURE WARNING (LDW)
 BLIND SPOT MONITORING (BSM)
 REAR CROSS-PATH DETECTION





THE GRAVITY OF SOUND

STUNNING ACOUSTICS



harman / kardon
by HARMAN

The perfection of the Sound Theatre by Harman Kardon® (optional)* exalts the sensations you feel behind the wheel of the Giulia. 900 W of power, 14 speakers (including subwoofer), 12-channel amplifier and Logic 7® technology. An exciting digital surround sound effect, full of depth and detail. In the Giulia, sound becomes almost material.



A HUMAN-MACHINE SYMBIOSIS

The connection between the Giulia and its driver has no boundaries. Thanks to the on-board technology: the next-generation infotainment system with Alfa™ Rotary Control, digital radio, Alfa™ Connect 3D Navigation with three-dimensional high-resolution maps, the 8.8" central display and 7" colour TFT instrument cluster display included in the on-board instruments.

CLEVER INFOTAINMENT

LIFE SHOULDN'T
BE REDUCED
TO BLACK AND WHITE



SOLID



Alfa Red (Standard)



Alfa White (Standard)



Alfa Black (Standard)

TRICOAT



Competizione Red (Option)*



Trofeo White (Option)*

METALLIC



Vulcano Black (Option)*



Silverstone Grey (Option)*



Vesuvio Grey (Option)*



Lipari Grey (Option)*



Montecarlo Blue (Option)*



Monza Red (Option)*



Imola Titanium (Option)*



Stromboli Grey (Option)*



Misano Blue (Option)*

WHEELS



18" Turbine Alloy Wheel (Standard - Giulia)



18" Luxury Design Alloy Wheel (Standard - Super)



18" Sports Alloy Wheel (Option* - Giulia & Super)



19" 5-Hole Dark Finish Alloy Wheel (Standard - Veloce)
(Option* - Linked to Veloce Pack)



19" Veloce Alloy Wheel (Option* - Veloce)

THE PURE GIULIA

Modelled following the laws of ergonomics, finished to offer landmark comfort in the segment: welcome to the world of the new Alfa Romeo Giulia. Depending on your style, you can choose from the wealth of features available, those that best enhance your driving experience. You just have to let yourself be enveloped by the front seat and grasp the leather-covered, small diameter, three-spoke sports-car steering wheel, to appreciate the true Alfa Romeo driving position, where everything is under control. The Cruise Control, the reduced gear lever, the Alfa DNA™ System to customize the dynamic behaviour according to your style and the road conditions, the Alfa™ Rotary Control to manage all the infotainment system functions with one simple gesture. And now you only have to press the start button on the left spoke of the steering wheel, as in an authentic super sports car, and start driving.



DEDICATED TO LUXURY

True luxury is about treating yourself. Offering exclusive design details, such as diamond polished alloy wheels, and an interior where you can immerse yourself in superior comfort, the Giulia represents this lifestyle. Enveloped by 6-Way Leather (Giulia) & 8-way Pieno Fiore Leather (Super) adjustable seats, you only have to put your hands on the unique steering wheel to turn the trip into an experience for all the senses.



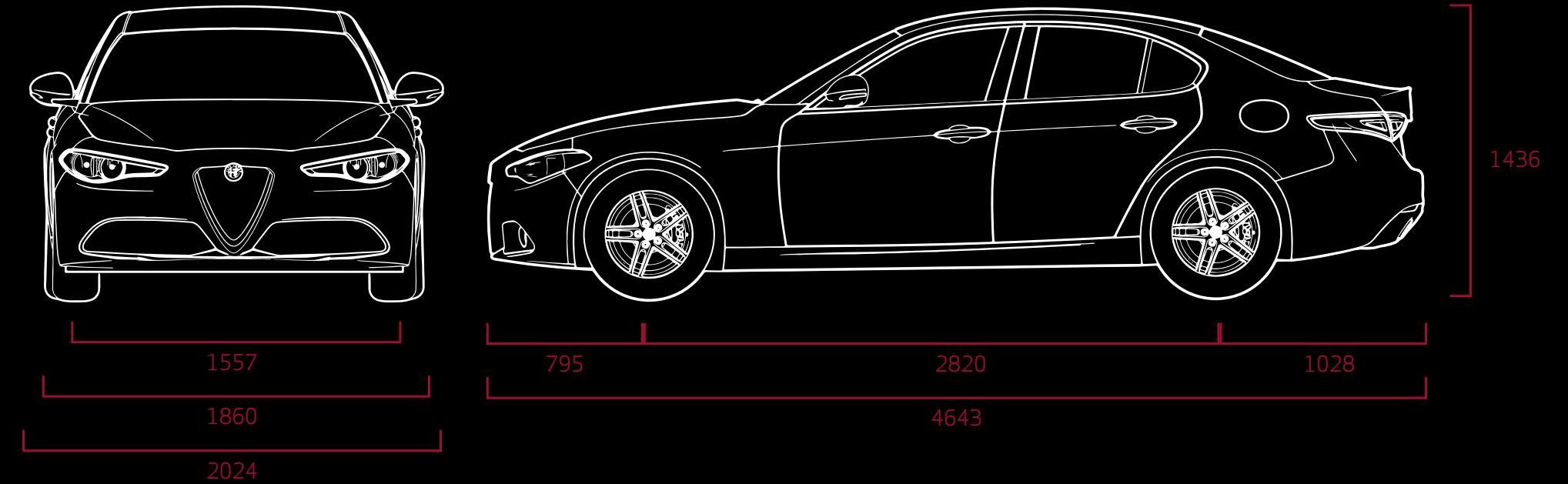
LIVE THE SPORTY DNA

Sportiness is in the Giulia's DNA, boldly visible in every detail. The specific wheels up to 19", the sporty leather-wrapped steering wheel with anatomic grips, aluminium on pedals and inserts on the door panels, dashboard, instrument panel and steering wheel. When sporty driving is a vital force, here is an interior where every single feature is geared for performance. Where the sound of the engine is like music.



TECHNICAL DATA

CHARACTERISTICS	2.0L Turbo Petrol 147kW	2.2L Turbo Diesel 132kW	2.0L Turbo Petrol 206kW
Transmission	8-Speed Automatic, Rear Wheel Drive	8-Speed Automatic, Rear Wheel Drive	8-Speed Automatic, Rear Wheel Drive
No. of Cylinders, Layout	4, in line	4, in line	4, in line
Valves Per Cylinder	4	4	4
Displacement (cm ³)	1,995	2,143	1,995
Max. Power (kW @ rpm)	147 @ 5,000 rpm	132 @ 3,750	206 @ 5,250 rpm
Max. Torque (Nm @ rpm)	330 @ 1,750 rpm	450 @ 1,750	400 @ 2,250 rpm
Acceleration 0-100 km/h (s)	6.6	7.1	5.7
Top Speed (km/h)	230	230	240
CONSUMPTION AND EMISSIONS ⁽¹⁾			
Emission Standard	EURO 6	EURO 6	EURO 6
Fuel Consumption - Urban (l/100km)	4.6	3.5	4.9
Fuel Consumption - Extra-Urban (l/100km)	8.4	5.3	8.2
Fuel Consumption - Combined (l/100km)	6.0	4.2	6.1
CO ₂ Emissions (g/km)	138	109	141
WEIGHT AND DIMENSIONS			
Tare Vehicle Mass (kg)	1394	1410	1490
Height (mm)	1436	1436	1436
Width (mm)	1860	1860	1860
Length (mm)	4643	4643	4643
Wheelbase (mm)	2820	2820	2820
Load Capacity (l)	480	480	480





La meccanica delle emozioni

alfaromeo.com.au

FCA Australia Pty Ltd ABN 23 125 956 505 trading as Fiat Chrysler Group, PO Box 23267, Docklands VIC 3008

This brochure is a publication of FCA Australia Pty Ltd trading as Fiat Chrysler Group. All product illustrations and specifications are based upon information current as at the time of publication approval. FCA Australia Pty Ltd trading as Fiat Chrysler Group reserves the right to make changes from time to time, without notice or obligation, in prices, specifications, colours and materials, and to change or discontinue models, which are considered necessary for the purpose of product improvement or for reasons of design and/or marketing. All vehicles, features, colours and/or accessories shown may not be available in Australia from time to time, or at all. For details of the vehicles, features, colours and/or accessories currently available in Australia, please consult your nearest authorised Alfa Romeo Dealer.

(*) Option/Optional - means that this feature is available on select models only and/or available at additional cost - for full details contact an authorised Alfa Romeo Dealer.

(1) Fuel consumption figures are according to Australian Design Rule (ADR) 81/02. Driving style, road and traffic conditions, fitment of accessories, environmental influences and vehicle condition can lead to consumption figures which may differ from those calculated with these standards.